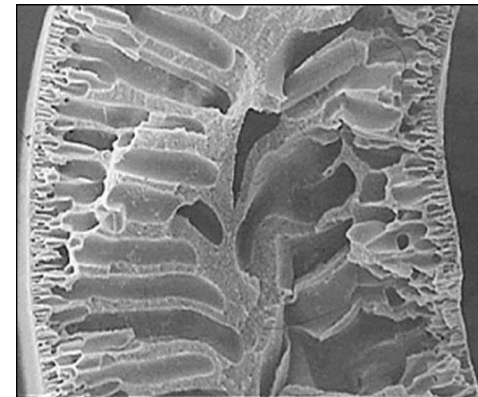


UltraPure

*Sustainable Water Solutions for Developing Countries,
Humanitarian and Disaster Relief*



ULTRAPURE PRIVATE LIMITED, 122A Joo Chiat Road, Singapore 427411.

Tel: +65 64403680

Fax: +65 64403679

Website: www.ultrapure.com.sg

Email: info@ultrapure.com.sg

ULTRAPURE PRODUCTS – RESIDENTIAL & COMMERCIAL



Point-of-Use



DUC410

Portable



HP-BT420

Low Pressure RO



NF14UF

NF20

Models available: NF7, NF14, NF20, NF25 with/without UF

Point-of-Entry



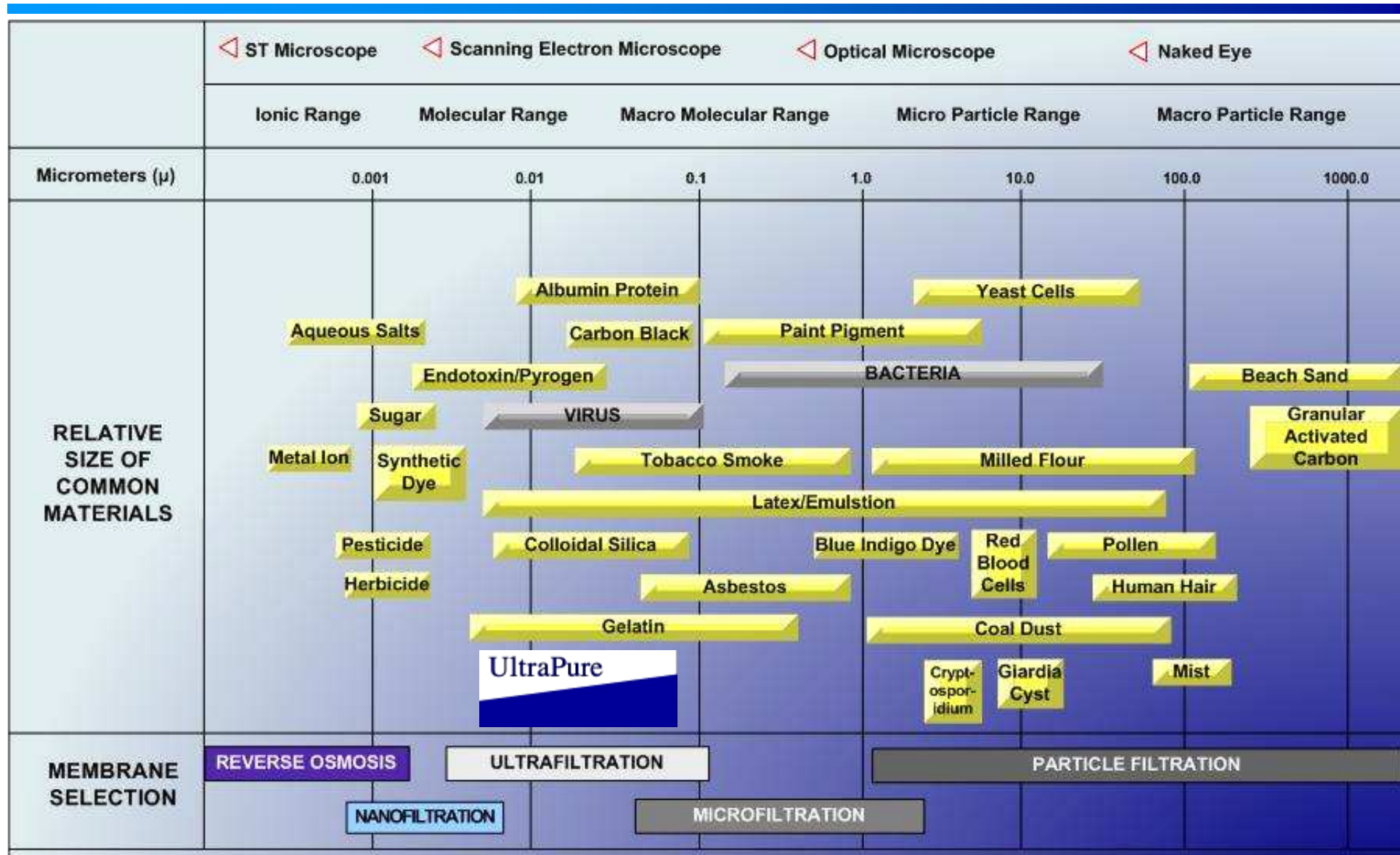
U640

U640C

S430

BT420

Filtration Spectrum Chart



ULTRAPURE PORTABLE SYSTEMS FOR HUMANITARIAN & DISASTER RELIEF



CYCLONE NARGIS - MYANMAR, 2008

Testing HP-BT420 before deployment



source: Singapore Red Cross, Straits Times

A member of the Singapore Red Cross showing Foreign Minister George Yeo how well water is filtered through HP-BT420 to become clean water

HP-BT420



ANDONG SLUM - CAMBODIA

Using HP-BT420 to turn bore hole water into clean filtered water for the villagers



KAMINDIMBIT – PAPUA NEW GUINEA

Converting Sepik River water into clean, potable drinking water



PADANG EARTHQUAKE – INDONESIA, 2009



UltraPure HP420 Cartridge



Specifications

Configuration	Hollow Fibre (Out to In Filtration)
Material	Hydrophilic modified PAN
Fibre Size	2.0mm outer diameter
Recovery	100% (Dead End Filtration)
Cartridge Dimension	5" Diameter x 20" Length
Housing Dimension	6" Diameter x 24" Length
Total Dimension	18" x 24" X 42" (50" with handle installed)
Weight	20 kg
Surface Area	50 sq ft
Operating Temperature	< 50 °C
Operating Pressure	< 5.0 bar
pH range (operating)	3 to 9
Product Turbidity	< 0.1 NTU*
Flow Rate (@ 1 bar): City Water	+/- 500 litres/h*

* subject to feed water condition

ULTRAPURE PRODUCTS – LOW COST SOLUTIONS



ONE Basic Product



DUC410



DUC410 cartridge

MANY Low Cost Solutions



Jerry Can - Pump



Filter Bucket

Gravity Filter System



Bicycle Hand Pump



Bicycle Foot Pump

ULTRAPURE DUC410 PRODUCT FEATURES & BENEFITS



Clean and Safe:

- Uses ultrafiltration (UF) hollow fibre membrane to provide safe drinking water. Traditionally, UF membranes were only used in high end and critical applications like municipal water treatment plants , hospitals and pharmaceutical industries. However, through advances in technology, it is now available for residential / commercial use.
- Removes bacteria, algae, spores, parasites and total suspended solids > 0.1 micron, thus eliminating water borne diseases such as diarrhoea, typhoid and cholera
- Works on highly turbid / cloudy water. Does not alter pH of the water

Healthy:

- Allows dissolved minerals essential to health to pass through.
- No added chemicals

Environmentally Friendly:

- No electrical power or batteries required
- Operates at low water pressure. Capable of high flow rates with instant access to clean water. No water wastage

Easy Installation and Maintenance:

- Simple to use, clean & maintain
- Easy to transport as it is light and does not break easily. Cartridge weighs less than 250g
- Relatively long life expectancy as the filter cartridge can be rinsed and cleaned to remove debris trapped in the membrane fibres



DUC410 cartridge



DUC410

MAINTENANCE



The DUC410 filter system needs only minimal maintenance.

Periodic cleaning

Rinse the filter cartridge with clean water to remove trapped debris when flow rate drops.

Inspect and clean the inside of the containers (e.g. buckets, housing) periodically.

Cartridge Replacement

The DUC410 filter cartridge can be used for six months and beyond, depending on the quality of water to be filtered (see below for factors).

Manufacturer's recommendation is to change at least every 12 months.

Several factors determine how long the filter cartridge will last. These include:

- Quality of the municipal water
- Levels of sediment and other undesirable substances in the water in the area/location. They can range from aging water pipes and infrastructure to pollutants in the environment.
- Amount of water used



Debris trapped in the DUC410 cartridge



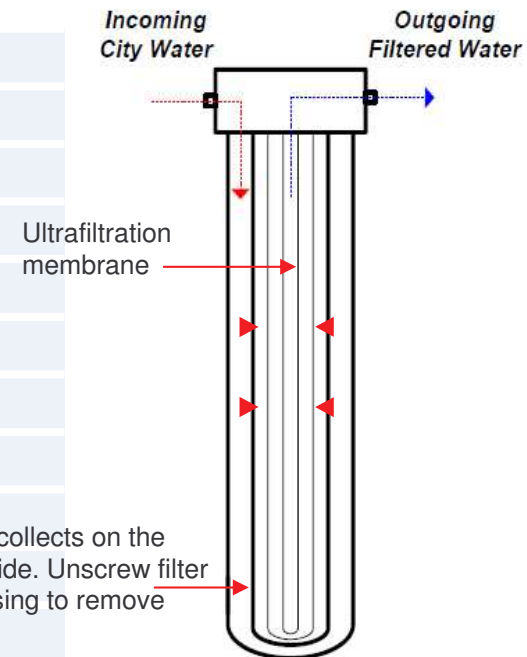
The DUC410 cartridge after rinsing with clean water

ULTRAPURE DUC410 Cartridge



Specifications

Configuration	Hollow Fibre (Out to In Filtration)
Material	Hydrophilic modified PAN
Fibre Size	1.0mm outer diameter
Recovery	100% (Dead End Filtration)
Cartridge Dimension	2" Diameter x 10" Length
Cartridge Weight	< 250g
Surface Area	9 sq ft
Operating Temperature	< 50 °C
Operating Pressure	0.5 to 5 bar
pH range (operating)	3 to 9
Product Turbidity	< 0.1 NTU*
Flow Rate (@ 1 bar): City Water	+/- 300 litres/h*



* subject to feed water condition